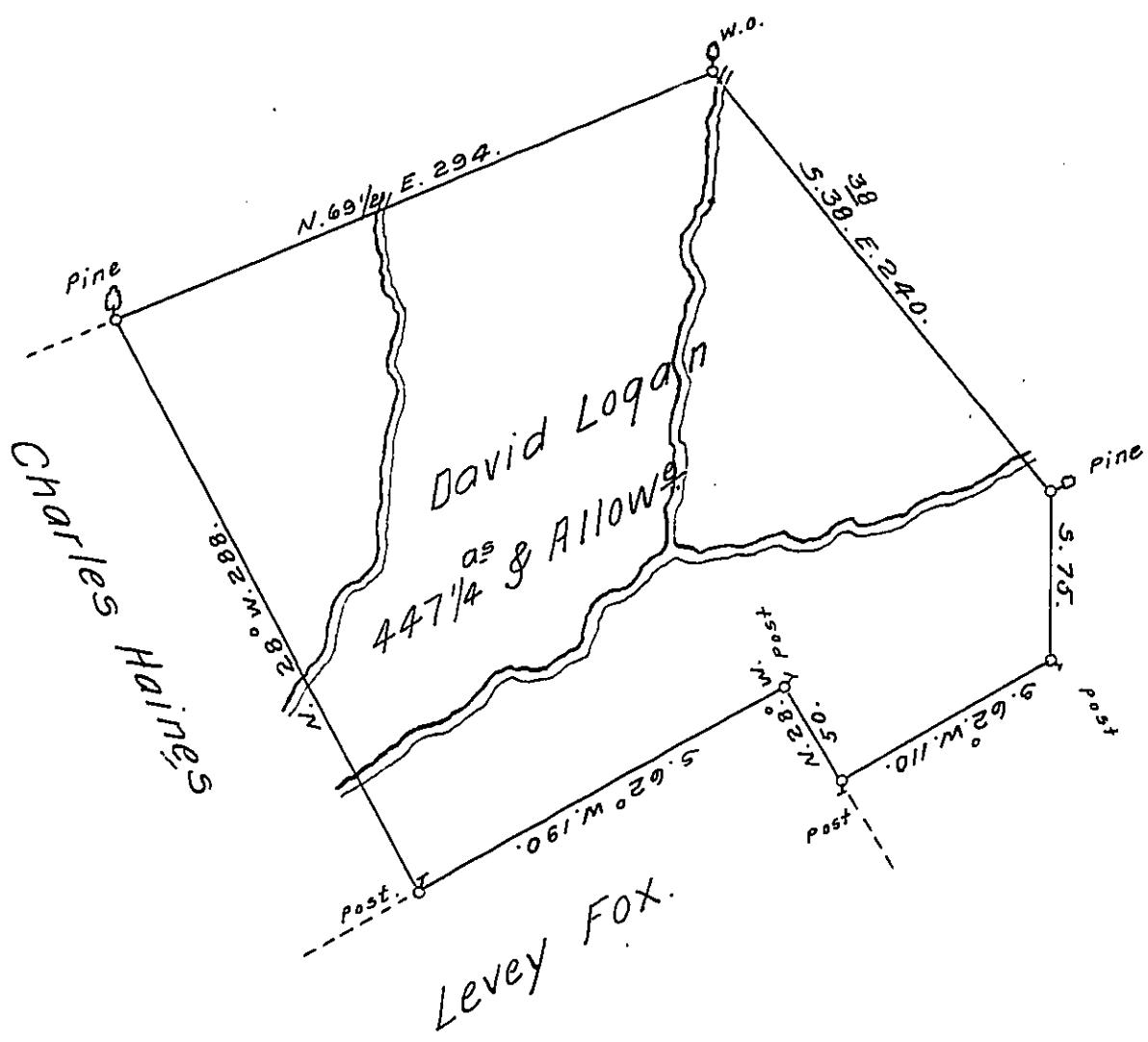


Butler  
Luzerne.



A Draught of a tract of land Called — Situate on the North Branch of Nescopeck Creek Joining Land Surv<sup>d</sup> for Cha<sup>s</sup> Hains & Co in Luzerne (formerly Northumb<sup>d</sup>) County. Containing four Hundred & forty seven Acres 1/4 & Allow<sup>e</sup>. of Six & Cent for Roads & Co. Surveyed for David Logan the 21<sup>st</sup> Day of Nov<sup>r</sup> 1784 in Pursuance of a Warrant Dated the 1<sup>st</sup> Day of July 1784.

by

To John Lukens Esq<sup>r</sup>. }  
Surv<sup>r</sup>. Gen<sup>l</sup>. }

W<sup>m</sup>. Gray D.S.

IN TESTIMONY that the above is a copy of the original remaining on file in the Department of Internal Affairs of Pennsylvania, made conformably to an Act of Assembly approved the 16th day of February, 1833, I have hereunto set my Hand and caused the Seal of said Department to be affixed at Harrisburg, this third day of May 1912.

*Henry Aouch*  
Secretary of Internal Affairs.